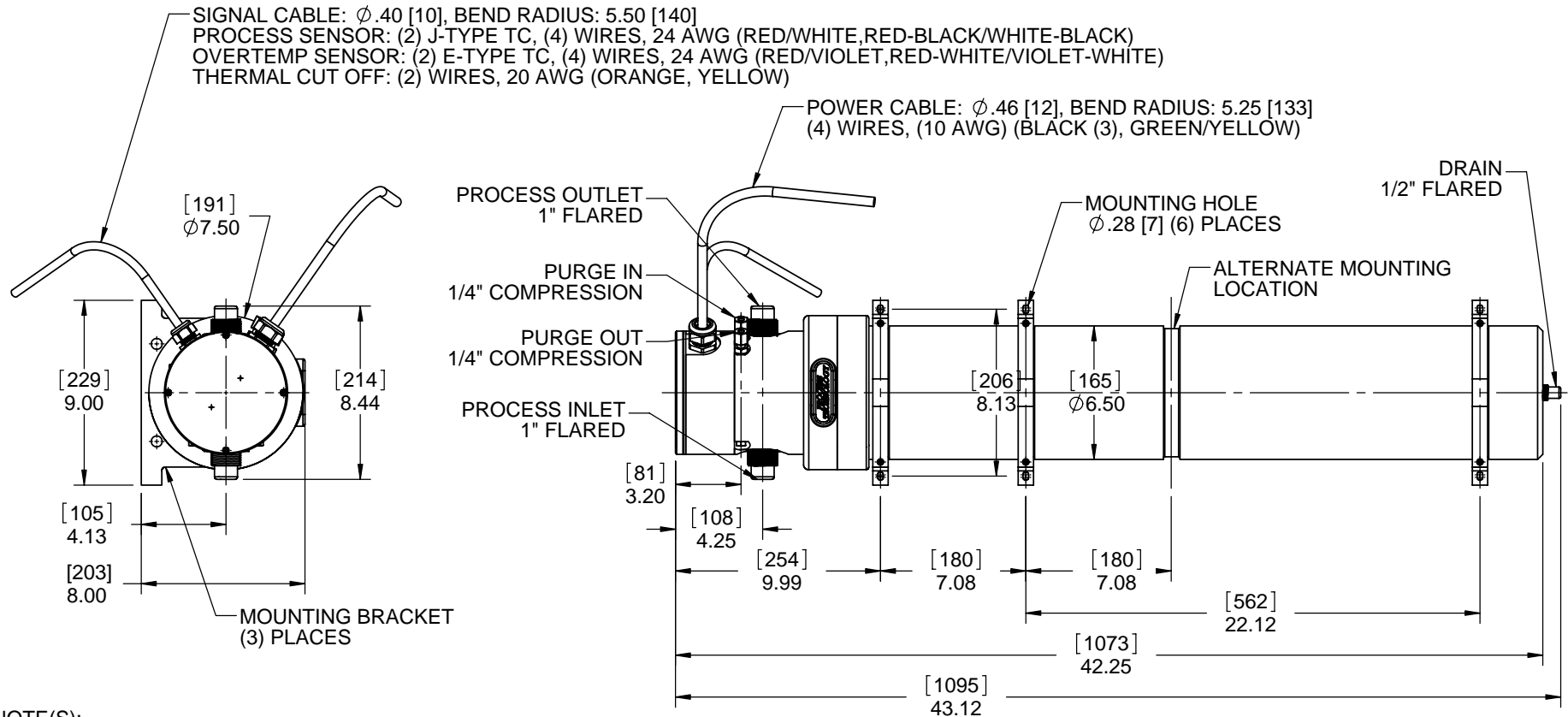


DRAWING NO. 54-0286-0



NOTE(S):

1. HEATER SPECIFICATIONS: 18 kW @ 480 V, 3 PH, 50/60Hz, 21.7 FLA
2. PURGE IN: N₂/CDA FLOW 1-2 SCFH [28-57 LPH], PRESSURE 20 \pm 2 PSIG [138 \pm 14 kPa]
3. THERMAL CUT-OFF DEVICE RATED FOR 277 VAC, 5 AMPS. OPENS AT 464°F [240°C].
4. WETTED COMPONENTS ARE PTFE, FEP AND PFA.
5. PRIMARY SEALS ARE PTFE, FEP AND PFA.
6. CABLE LENGTHS: 10ft. [3.0m]
7. REDUNDANT PROCESS AND OVER-TEMP SENSORS PROVIDED.
8. VOLUME: 1.96 GAL [7.4 L]

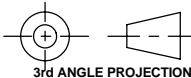
APPROVED BY: PRODUCTION/QC REVIEW: CONTROLLED DOCUMENT LOCATIONS:

				PCN:
				MATERIAL:
REV	BY	DATE	DESCRIPTION OF CHANGE	

UNLESS NOTED
TOLERANCES ARE:
0.00 = ± 0.06
0.000 = ± 0.030
ANGLES = $\pm 1^\circ$
SECONDARY UNIT
FOR REFERENCE ONLY

[mm]
INCHES

INTERPRET GEOMETRIC
DIMENSIONING AND
TOLERANCING PER
ASME Y14.5M



PROCESS TECHNOLOGY®

7010 LINDSAY DR, MENTOR OH USA
(P) 440-946-9500 (F) 440-974-9561
WWW.PROCESS-TECHNOLOGY.COM

DRAWN BY: RPO DATE: 10/17/07 DESIGNER: DATE:

DESCRIPTION:

FACILITIES: TIH18-63CASJE

SIZE: A SCALE: NONE PAGE: 1 OF 1 DRAWING No. 54-0286-0

THIS DRAWING IS THE PROPERTY OF PROCESS TECHNOLOGY. IT CONTAINS CONFIDENTIAL INFORMATION AND MAY NOT BE REPRODUCED IN ANY WAY WITHOUT THE PERMISSION OF PROCESS TECHNOLOGY.